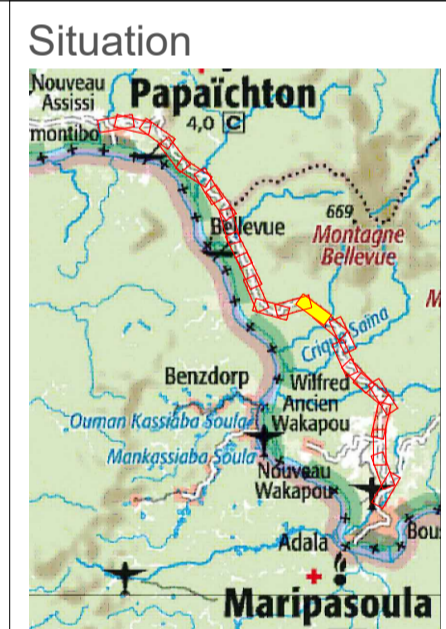
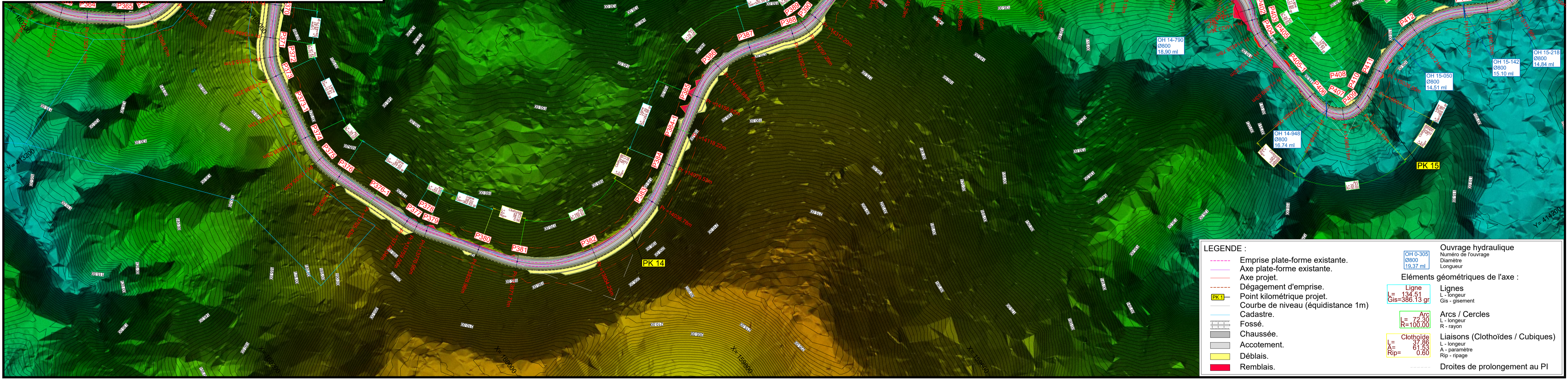


Indice	Date	Modifications	Etabli :	Echelle	1/2000
1	09/03/20	Etablissement du Plan	AI	N° PIECE :	4-11
				Phase :	DCE
Remise à niveau et aménagement de la Piste reliant les communes de MARIPASOULA et PAPAÏCHTON		Eléments Géométriques Plan des Aménagements			
Dossier de Consultation des Entreprises		Vue en Plan - LIDAR - Profil en Long			
		Planche n° 11			

4_PROJ_Liaison_M-P_A0_LIDAR.dwg

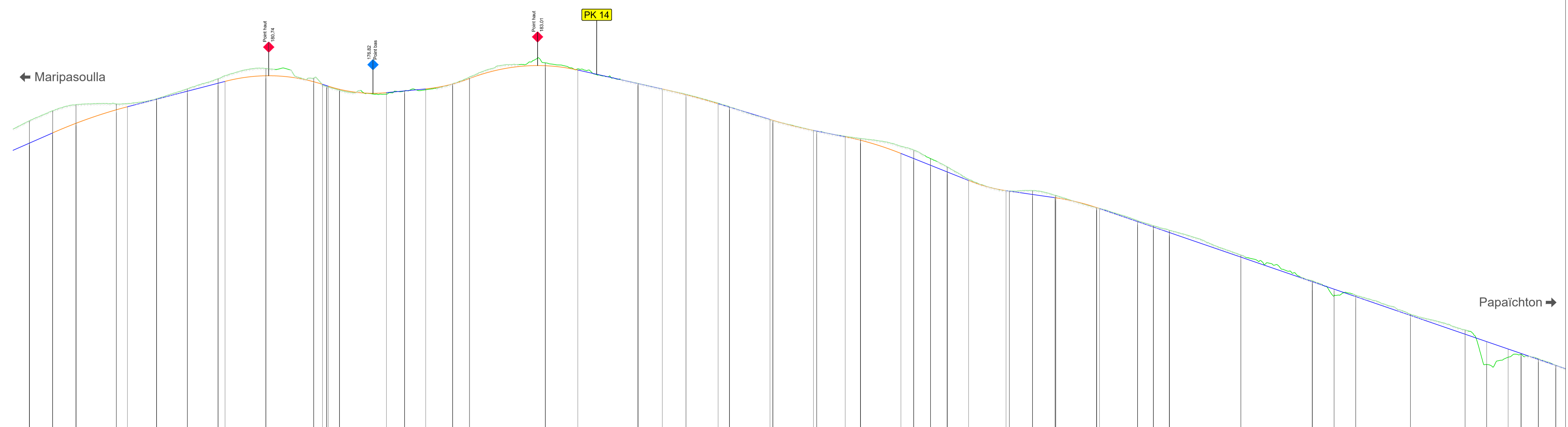


Axe : AXE Maripasoula Papaïchton

Echelle en X : 1/2000

Echelle en Y : 1/500

- Type de segment :
- Pente / Rampe
 - Arc de cercle
 - Parabole
 - Cubique
- Plate-forme existante
◆ Point haut projet.
◆ Point bas projet.
PK 1 Point kilométrique projet.



PC : 98.00 m																																																						
Numéro de profils en travers	P371	P372	P373	P374	P375	P376	P376-1	P377	P378	P379	P380	P381	P382	P383	P384	P384-1	P385	P386	P387	P388	P389	P390	P391	P392	P393	P393-1	P394	P395	P396	P396-1	P397	P398	P399	P400	P401	P402	P403	P404	P405															
Altitudes TN	170.70	172.84	174.30	175.63	177.82	180.06	182.36	180.22	179.30	177.51	177.38	177.81	182.01	179.03	176.57	173.81	171.00	165.39	166.76	164.20	162.28	160.44	155.06	155.15	154.08	151.28	146.47	147.31	146.30	140.81	135.08	131.06	121.10	116.01	116.66	117.71	116.24	8.90																
Abscisses	13494.80	13815.51	13926.22	13975.12	13965.42	13965.82	13705.43	13748.04	13769.50	13770.95	13826.96	13877.71	13954.25	14036.78	14075.53	14118.22	14199.92	14195.96	14235.03	14282.37	14297.29	14312.20	14367.62	14388.23	14409.84	14445.29	14481.74	14495.89	14510.05	14637.29	14655.76	14773.44	14817.85	14823.35	14838.78	14854.22																		
Altitudes Projet	165.73	167.89	170.14	173.19	177.29	179.07	180.73	179.40	178.83	177.72	177.97	182.01	182.07	179.03	176.52	174.51	171.00	165.39	166.74	164.23	162.29	160.44	155.06	155.15	154.29	151.28	146.47	147.31	146.30	140.81	135.08	131.06	121.10	116.01	116.66	117.71	116.24																	
Ecarts Projet - TN	-4.97	-4.94	-4.16	-1.31	-0.73	-0.11	-0.52	-0.82	-0.33	-0.20	-0.04	-0.32	-0.04	-0.02	-0.05	-0.14	0.01	0.03	-0.10	-0.39	-1.61	-1.91	-1.48	-1.13	-0.27	-0.01	-0.87	-0.54	-0.81	-0.49	-0.23	1.50	-0.33	-0.27	-0.36	0.09	1.83	1.89																
Distances partielles	7	20.53	20.89	35.91	9.92	25.99	27.39	27.39	6.18	36.44	42.61	7.72	3.74	11.45	41.84	16.17	23.95	14.87	67.66	28.92	53.61	21.70	21.05	28.62	10.07	36.14	38.77	28.28	13.63	35.93	11.41	14.91	14.91	19.04	33.35	23.64	19.84	37.22	36.45	14.15	14.15	63.67	63.67	19.37	19.37	48.66	48.66	19.20	19.20	11.90	0.19	15.43	15.43	
Pentes et rampes	RC = -1500.00 L = 66.72 RAMPE L = 86.95 m P = 6.50 % RC = -400.00 L = 86.77 RC = 500.00 L = 51.87 RAMPE L = 34.97 m P = 2.40 % RC = 550.00 L = 38.82 RC = -640.00 L = 96.31 PENTE L = 75.31 m P = -5.00 % RC = 1500.00 L = 49.67 PENTE L = 46.21 m P = -7.60 % RC = -1000.00 L = 49.57 PENTE L = 60.27 m P = -10.00 % RC = 525.00 L = 33.35 PENTE L = 43.48 m P = -3.60 % RC = -400.00 L = 39.77 PENTE L = 415.28 m P = -8.60 %																																																					
Alignements droits et courbes	TE 57 m DROITE L = 71.81 m DROITE L = 85.23 m DROITE L = 88.02 m DROITE L = 77.39 m DROITE L = 47.34 m DROITE L = 56.42 m DROITE L = 72.90 m DROITE L = 97.35 m																																																					