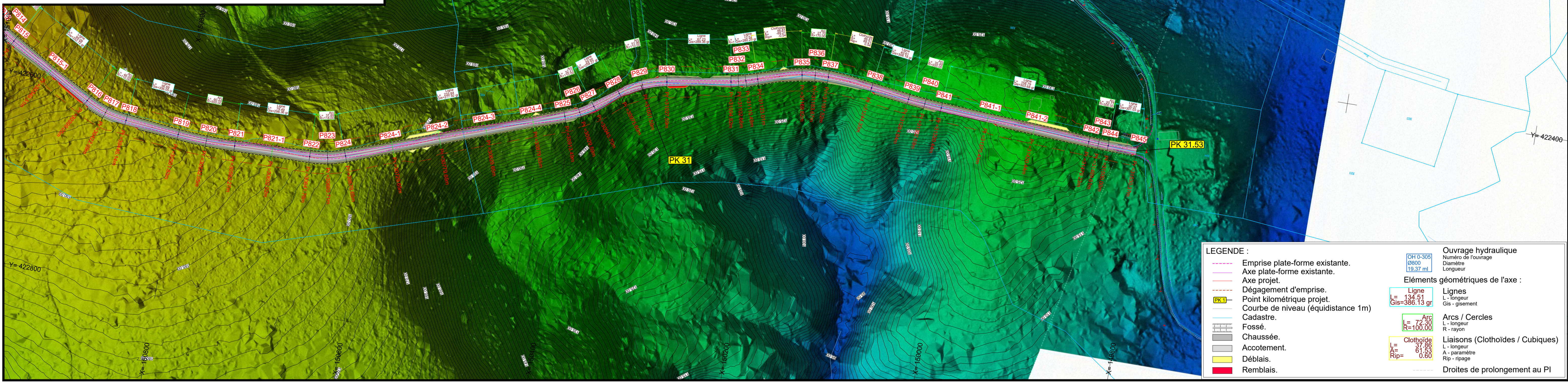


| | | | | | |
|--|----------|---|----------|---------------|--------|
| Indice | Date | Modifications | Etabli : | Echelle | 1/2000 |
| 1 | 09/03/20 | Etablissement du Plan | AI | N° PIECE : | 4-24 |
| - | - | - | - | Phase : | DCE |
| Remise à niveau et aménagement de la Piste reliant les communes de MARIPASOULA et PAPAÏCHTON | | Eléments Géométriques Plan des Aménagements | | | |
| Dossier de Consultation des Entreprises | | Vue en Plan - LIDAR - Profil en Long | | Planche n° 24 | |

4_PROJ_Liaison_M-P_A0_LIDAR.dwg



LEGENDE :

- Emprise plate-forme existante.
- Axe plate-forme existante.
- Axe projet.
- Dégagement d'emprise.
- Point kilométrique projet.
- Courbe de niveau (équidistance 1m)
- Cadastre.
- Fossé.
- Chaussée.
- Accotement.
- Déblais.
- Remblais.

Ouvrage hydraulique

OH 0-305
 0800
 19.37 ml

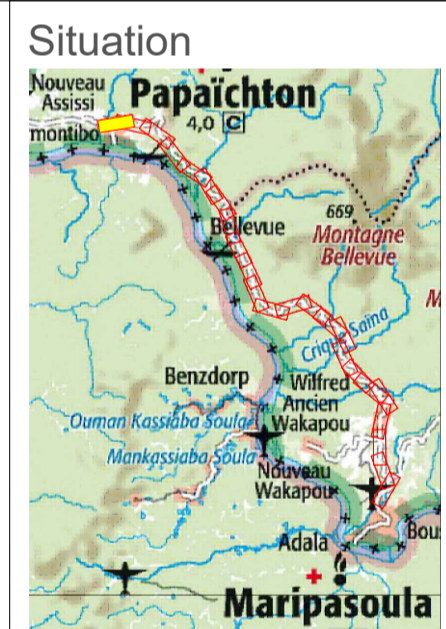
Eléments géométriques de l'axe :

Lignes
 L = 134.51
 Gis = 386.13 gr

Arcs / Cercles
 L = 7
 R = 100.00

Liaisons (Clothoïdes / Cubiques)
 L = 37.86
 A = 61.53
 Rip = 0.60

Drôites de prolongement au PI

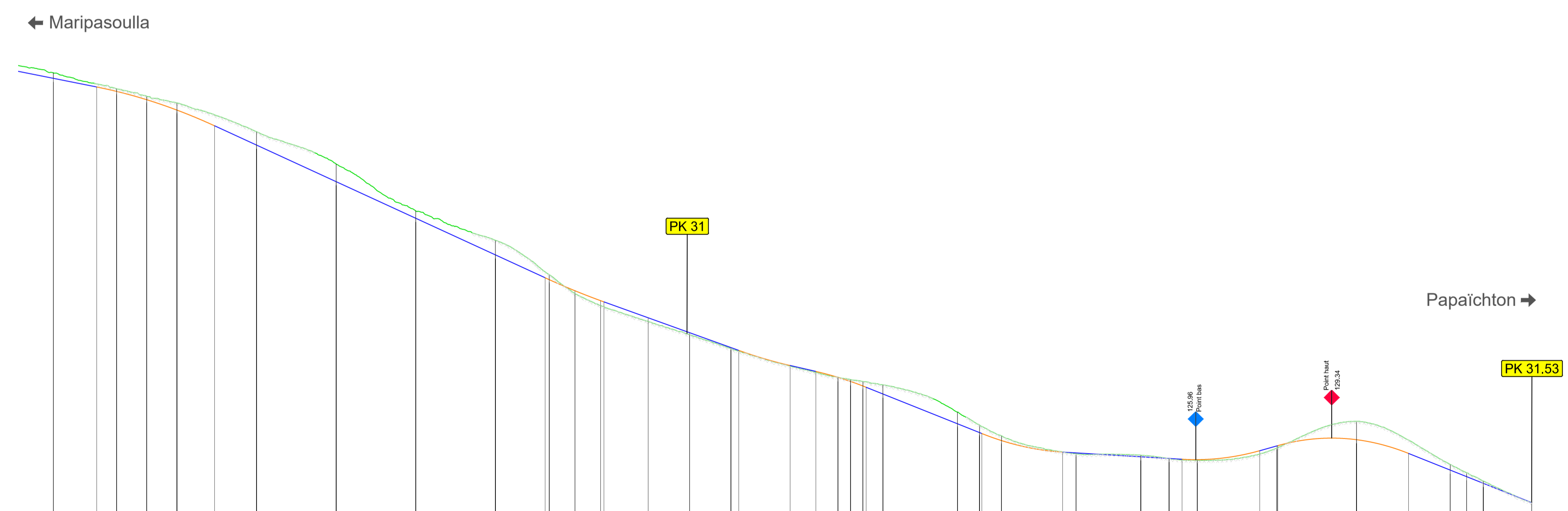


Axe : AXE Maripasoula Papaïchton

Echelle en X : 1/2000

Echelle en Y : 1/500

- Type de segment :
- Pente / Rampe
 - Arc de cercle
 - Parabole
 - Cubique
- Plate-forme existante
- Point haut projet.
- Point bas projet.
- PK 1 Point kilométrique projet.



PC : 100.00 m

| Numéro de profils en travers | P821-1 | P822 | P823 | P824 | P824-1 | P824-2 | P824-3 | P824-4 | P825 | P826 | P827 | P828 | P829 | P830 | P831 | P832 | P833 | P834 | P835 | P836 | P837 | P838 | P839 | P840 | P841 | P841-1 | P841-2 | P842 | P843 | P844 | P845 | |
|-------------------------------|-------------------------|----------|---------------------------------|----------|----------|----------|------------------------|----------|----------|----------|-------------------------------|----------|------------------------|----------|----------------------------|----------|----------------------------|----------|-------------------------------|----------|-----------------------|----------|------------------------|----------|--------------------------------|----------|-------------------|----------|----------|----------|----------|----------|
| Altitudes TN | 186.86 | 184.50 | 183.81 | 182.50 | 181.96 | 178.40 | 175.37 | 168.62 | 165.04 | 165.04 | 160.40 | 155.01 | 152.06 | 150.18 | 147.66 | 145.58 | 143.38 | 140.74 | 138.81 | 136.88 | 135.24 | 133.52 | 132.89 | 132.25 | 131.50 | 129.89 | 128.89 | 127.77 | 126.94 | 125.20 | 122.59 | 119.21 |
| Abcisses | 30802.02 | 30841.76 | 30881.50 | 30921.25 | 30961.00 | 30979.65 | 30979.65 | 30979.65 | 30979.65 | 30979.65 | 30979.65 | 30979.65 | 30979.65 | 30979.65 | 30979.65 | 30979.65 | 30979.65 | 30979.65 | 30979.65 | 30979.65 | 30979.65 | 30979.65 | 30979.65 | 30979.65 | 30979.65 | 30979.65 | 30979.65 | 30979.65 | 30979.65 | 30979.65 | 30979.65 | 30979.65 |
| Altitudes Projet | 186.86 | 184.50 | 183.81 | 182.50 | 181.96 | 178.40 | 175.37 | 168.62 | 165.04 | 165.04 | 160.40 | 155.01 | 152.06 | 150.18 | 147.66 | 145.58 | 143.38 | 140.74 | 138.81 | 136.88 | 135.24 | 133.52 | 132.89 | 132.25 | 131.50 | 129.89 | 128.89 | 127.77 | 126.94 | 125.20 | 122.59 | 119.21 |
| Ecart Proj - TN | -0.85 | -0.48 | -0.41 | -0.84 | -1.11 | -1.71 | -2.09 | -2.78 | -1.17 | -1.17 | -2.29 | -0.92 | 0.43 | 0.77 | 0.98 | 0.32 | 0.19 | 0.12 | -1.18 | -1.18 | -0.73 | -0.73 | -0.73 | -0.73 | -0.73 | -0.73 | -0.73 | -0.73 | -0.73 | -0.73 | -0.73 | |
| Distances partielles | 7.74 | 27.31 | 12.44 | 18.94 | 18.94 | 23.63 | 26.37 | 50.00 | 50.00 | 50.00 | 31.28 | 18.66 | 16.11 | 29.90 | 25.99 | 25.99 | 4.89 | 32.23 | 16.18 | 13.93 | 7.83 | 12.52 | 48.81 | 13.85 | 38.34 | 8.47 | 40.61 | 17.75 | 10.83 | 50.00 | 32.66 | 26.13 |
| Pentes et rampes | RC = -1150.00 L = 73.96 | | PENTE L = 207.65 m P = -11.50 % | | | | RC = 1500.00 L = 36.91 | | | | PENTE L = 84.63 m P = -9.00 % | | RC = 1000.00 L = 32.23 | | PENTE L = 750.00 L = 31.57 | | PENTE L = 600.00 L = 50.70 | | PENTE L = 74.96 m P = -1.50 % | | RC = 575.00 L = 48.78 | | RC = -485.00 L = 82.13 | | PENTE L = 77.27 m P = -10.00 % | | PENTE L = 30.37 m | | | | | |
| Alignements droits et courbes | DROITE L = 79.49 m | | DROITE L = 233.84 m | | | | DROITE L = 29.90 m | | | | DROITE L = 67.23 m | | DROITE L = 22.28 m | | DROITE L = 40.61 m | | DROITE L = 35.48 m | | DROITE L = 158.79 m | | DROITE L = 30.37 m | | | | | | | | | | | |